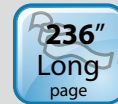


A Duplex High-Volume Production Scanner



Features:

- Fast, 120 ppm / 240 ipm scanning in color, grayscale and monochrome (200 dpi, color)
- Support document up to A3 size (297 x 432 mm)
- Robust 500-page automatic document feeder
- Daily duty cycle of up to 60,000 sheets
- Auto crop and deskew a document with the advanced image processing unit to enhance the scanning speed
- Latest USB 3.0 connectivity for faster transmission speed
- Reverse roller technology delivers outstanding feeding reliability
- Hard and embossed card scanning up to 1.25 mm in thickness in landscape feeding
- Press and scan to cloud servers via the bundled software Button Manager V2
- Earth-friendly LED technology
- Long page scanning up to 6000 mm (236")
- Auto power off setting

A New Generation of A3 Production Scanner

Avision is pleased to announce its release of the high-volume production scanner with a robust 500-page auto document feeder and a blazing scanning speed of up to 120 pages per minute in Color, Grayscale, and Monochrome. Combining paper protection technology and triple ultrasonic double-feed detection capability, the AD8120 delivers exceptional feeding reliability to maximize your scanning productivity in a small unit.

High-Volume Daily Duty Cycle

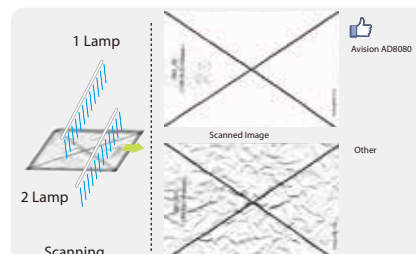
The scanner can be used to scan up to 60,000 pages per day through the 500-page automatic document feeder. The data indicates that this scanner is designed to scan document in any application requiring frequent document and hard card scanning.

Curved or Straight Paper Path

To provide scanner users with the most versatile scanning environments, the user has the choice to utilize a "Curved or Straight Paper Path". By opening the rear cover, users can use the straight path to transport paper to the rear of the unit. To utilize the straight paper path ensures high reliability with thick, long paper, or more fragile documents.

Dual-lamp Design to Handle Wrinkled Documents

Designed to handle even extreme applications, the AD8120 scanner is built-in with two long-lasting lamps. These mercury-free lamps give you maximum illumination to help eliminate shadows from wrinkled documents.

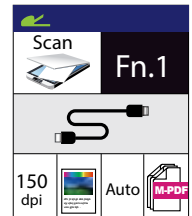


Paper Protection Technology

The advanced Paper protection technology protects valuable paper from being wrinkled or torn by halting the scan process once a skewed page is detected.

A Large LCD Display

The AD8120 is easy to use through the clear 1.8" LCD display. By selecting your destination and pressing the "Scan" button, the scan can be done and the scanned image can be sent to your specified destination application such as e-mail, printer, or your favorable image-editing software application. Up to nine frequently used scan settings and destinations can be preset for different scanning needs.



Triple Ultrasonic Sensors to Detect Overlapped Paper

Three ultrasonic sensors provide protection against double feeds by detecting and preventing overlapping pages from being fed into the scanner at the same time. Each sensor can be set to ignore or detect specified areas of a document to accommodate pages with labels or attachments.

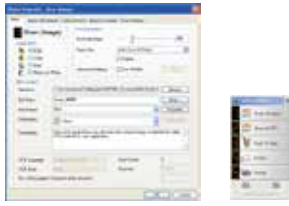
A Document Scanner with an Imprinter (Optional)

The AD8120 is a quality document scanner integrated with an imprinter. The innovative combination allows users to print a sequence number or characters physically on the rear side of each page that is being scanned. By printing serial numbers, the scanned data can be tracked, matched and/or indexed with the original document.

AD8120 Production Scanner

Avision's Button Manager V2

Completes your scan with a single step



The Button Manager V2 main screen

Button Manager V2 makes it easy for you to scan and send your image to your favorite destinations with a press one button. Now the new version comes with an innovative feature to let you scan and automatically upload the scanned document to popular cloud repositories such as Google Docs, Microsoft SharePoint or FTP. In addition, the iScan feature allows you to insert the scanned image or recognized text after optional OCR (Optical Character Recognition) process to your text editor such as Microsoft Word to get your job done easily and quickly.

AVScan X

The Intelligent Document Management Tool



The AVScan X main screen

Document Imaging is the very first step of Document Management. However, poor quality images can cause serious problems to later indexing or storing processes. It may increase scanning labor costs and lowers the OCR accuracy. AvScan X ensures all documents are checked and polished at the time they are scanned such that the image quality is guaranteed before they are ready to use for other purposes.

AvScan X is an intelligent scanning and electronic filing solution. AvScan X possesses distinct features that convert and index scanned information into electronic documents for easy storage and fast retrieval.

Nuance PaperPort SE14

- The Professional Choice to Organize and Share Your Documents



The PaperPort SE14 main screen

PaperPort SE 14 is Nuance's most popular scanning and document management solution, carefully designed specifically for home office use. Part traditional file cabinet, part digital-document desktop, PaperPort SE 14 is the fastest and easiest way to scan, share, search, and organize your documents. Additionally, PaperPort SE 14 now delivers anytime-anywhere access to your most important files however it's convenient for you – using a PC, Mac, iPhone, iPad, or Android device.



Avision AD8120 Product Specifications

Paper Feeding:	ADF 500-page capacity
Scanning Technology:	CCD
Light Source:	LED (LIGHT BAR)
Card Thickness:	Up to 1.25 mm
Long Page Mode:	6000 mm (236 in.)
Document size (ADF):	Min. 52 x 74 mm (2 x 2.9 in) Max. 297 x 432 mm (12.2 x 17 in)
ADF Scanning Speed:	120 PPM/ 240 IPM (color, A4, 200 dpi) 80 PPM/ 160 IPM (color, A4, 300 dpi)
Paper Thickness:	U-Turn Path: 27~105 g/m ² (7~32 lb.) Straight Path: 27~413 g/m ² (7~110 lb.)
Optical Resolution:	600 dpi
Output Resolution:	75, 100, 150, 200, 300, 400 and 600 dpi
Output Formats:	B/W, greyscale, 24-bit color
File Formats:	BMP, PNG, GIF, JPEG, PDF, Searchable PDF Multi-Page TIFF, TIFF, RTF, TXT, XPS, DOC, XLS, PPT, DOCX, XLSX, PPTX, HTML.
Bundled Software:	Avision Button Manager V2 Avision AVScan X Nuance PaperPort SE 14
Interface/Drivers:	USB 3.0 / TWAIN, ISIS
Power Supply:	Input: 100~240 VAC, 50/60 Hz Output: 24V, 2A
Environmental Factors:	Operating temperature: 10°C to 35°C (50°C to 95°C) Operating humidity: 10% to 85%
Dimensions (W x D x H):	460 x 444 x 328 mm 18.1 x 17.4 x 12.9 in.
Weight:	25 kg (55 lb.)
Recommended Daily Scanning Volume:	Up to 60,000 sheets
Multi-feed Detection:	Ultrasonic Sensor

We have endeavored to ensure that the information in this manual is accurate and that Avison is not responsible for printing or typographical errors. The above configuration is for reference only. The actual configuration (software, hardware) should be complied with the specification described in the purchase agreement. Avison Inc. owns the intellectual property rights of the product outlook and design and the product outlook and design are subject to change. Avison reserves the right to the product outlook and design without notice. Avison does not warrant these products nor is responsible for the efficiency or use of these products. When the third party product is for reference only and Avison does not warrant these products nor is responsible for the efficiency or use of these products.

System Requirements

CPU:	Intel® Core i3 (2.1GHz) or Higher
Memory:	2GB (32bit Windows) 4GB (64bit Windows)
DVD-ROM:	DVD ROM Drive
USB:	USB3.0 Port (USB 2.0/ 1.1 supported)
Windows® Operating System:	Windows® XP SP3, Vista, 7, 8.x, 10 (32 & 64 bit)

Contents:

Scanner
Power Supply
Quick Guide
USB 3.0 Cable
CD-ROM includes:
-Scanner Driver
(TWAIN/ ISIS/ WIA Driver)
-Avision Manager V2
-Avision AVScan X
-Nuance PaperPort SE 14



Avision
www.avision.com